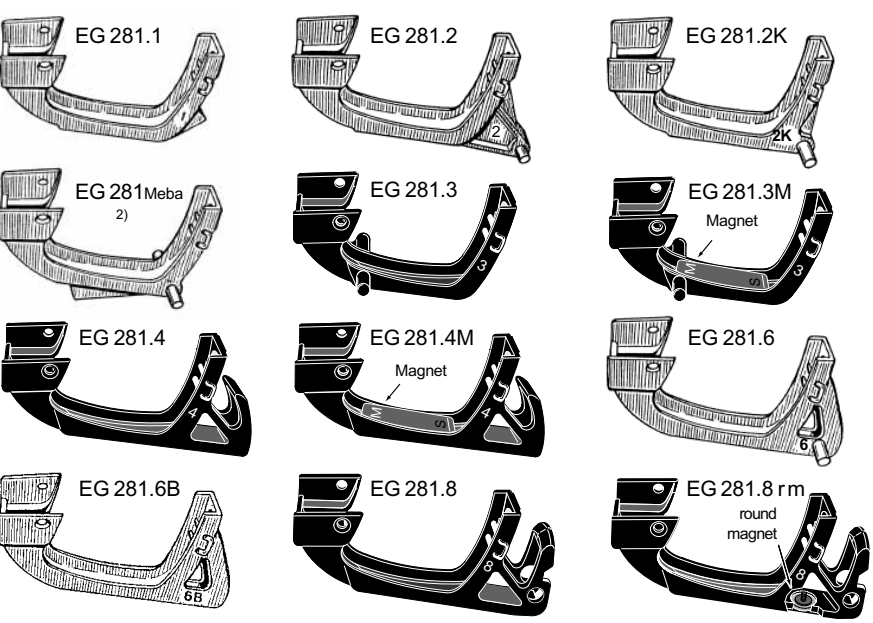
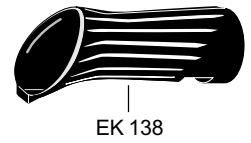
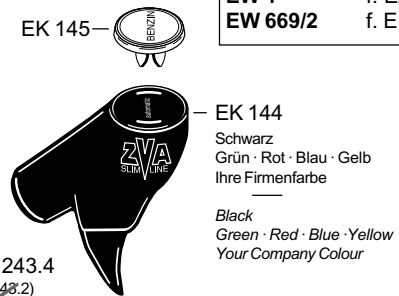
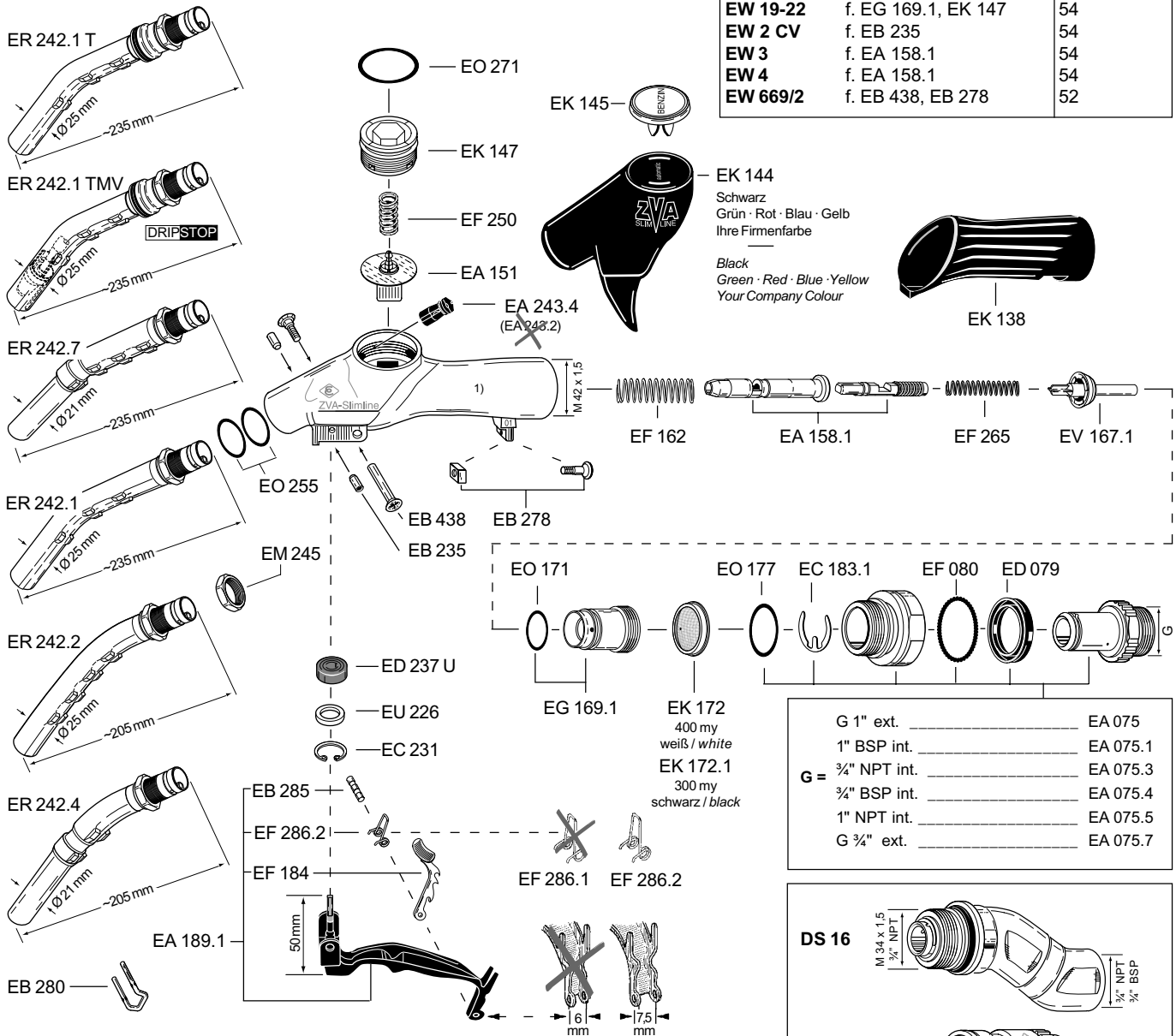


- 1) Zapfventil- und Swivel-Gehäuse werden **nicht** als Ersatzteil geliefert.
 2) Diese alten Bügelformen für Neukonstruktionen **nicht** verwenden.

- 1) Nozzle body and swivel body are **not** available as spare parts.
 2) These old guard styles should **not** be used for new constructions.

Montagewerkzeuge / Assembly Tools		siehe Seite / see page
EW - J1	f. EC 231	52
EW 19-22	f. EG 169.1, EK 147	54
EW 2 CV	f. EB 235	54
EW 3	f. EA 158.1	54
EW 4	f. EA 158.1	54
EW 669/2	f. EB 438, EB 278	52



G 1" ext.	EA 075
1" BSP int.	EA 075.1
3/4" NPT int.	EA 075.3
3/4" BSP int.	EA 075.4
1" NPT int.	EA 075.5
G 3/4" ext.	EA 075.7

