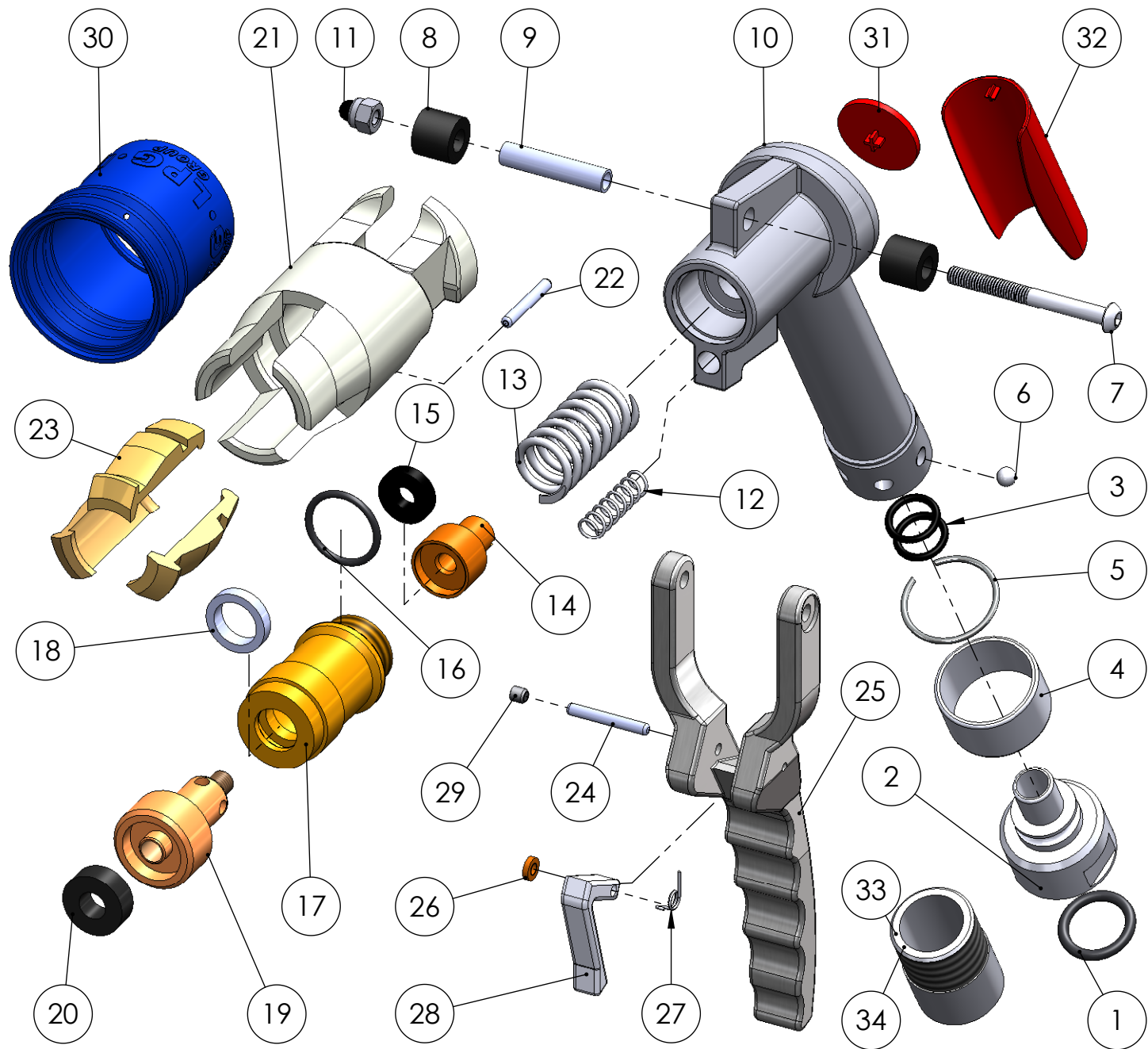


pos.	cod.	name	Q.ty	mat.
1	lpg 204	O-Ring	1	nbr
2	lpg 104	attacco girevole swivel	1	acciaio-steel
3	lpg 203	O.Ring	2	nbr
4	lpg 103	collare-bush	1	acciaio-steel
5	lpg 202	anello elastico-flexible ring	1	acciaio-steel
7	lpg 208	bullone-bolt	1	acciaio-steel
8	lpg 115	ruzzo-roll	2	resina-resin
9	lpg 102	boccola-bush	1	ottone-brass
10	lpg 101	corpo-body	1	AL
11	lpg 205	dado-nut	1	acciaio-steel
12	lpg 116	molla-spring	1	acciaio-steel
13	lpg 117	molla-spring	1	acciaio-steel
14	lpg 109	valvola-valve	1	acciaio-steel
15	lpg 119	guarnizione-gasket	1	poliuretano-sealthane
16	lpg 206	O-Ring	1	nbr
17	lpg 110	testa-head	1	ottone-brass
18	lpg 207	anello a labbro lip gasket	1	nbr
19	lpg 111	pistone-piston	1	ottone-brass
20	lpg 112	guarnizione-gasket	1	nbr
21	lpg 113	manicotto-sleeve	1	AL
22	lpg 209	spina-pin	1	acciaio-steel
23	lpg 114	aggancio-jaw	3	ottone-brass
24	lpg 217	spina-pin	1	acciaio-steel
25	lpg 106	leva-lever	1	AL
26	lpg 118	distanziale-spacer	1	ottone-brass
27	lpg 107	molla-spring	1	acciaio-steel
28	lpg 105	gancio-hook	1	acciaio-steel
29	lpg 216	grano-screw	1	acciaio-steel
30	lpg 212	soffietto-hood	1	gomma-rubber
31	lpg 219	disco-disk	1	ABS
32	lpg 218	copertura-guer	1	ABS
33	lpg 215	riduzione-reduction M 1"gas - F 3/4"gas	1	acciaio-steel
34	lpg 220	riduzione-reduction M 1"gas - F 3/4"npt	1	acciaio-steel



denominazione	PISTOLA L.P.G. attacco Italia - tubo 1" o 3/4" gas / npt
name	L.P.G. GAS NOZZLE "Italian type coupling" - pipe fitting 1" or 3/4" gas / npt


LPG 100 - IT9
 codice code